



OTAGOMUSEUM

Ready to Rock

A rock occurs when two or more minerals are joined together.

Look closely at the Otago Museum stairwell. It is made of a rock called GRANITE.

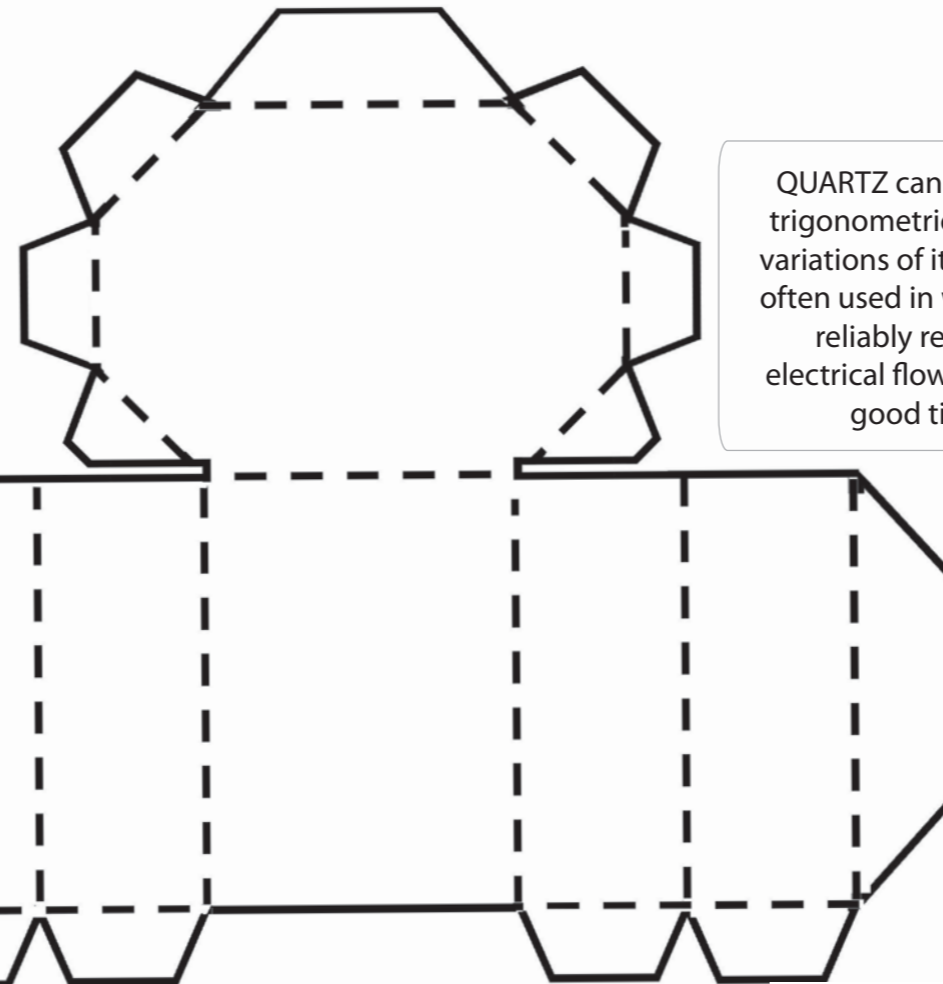
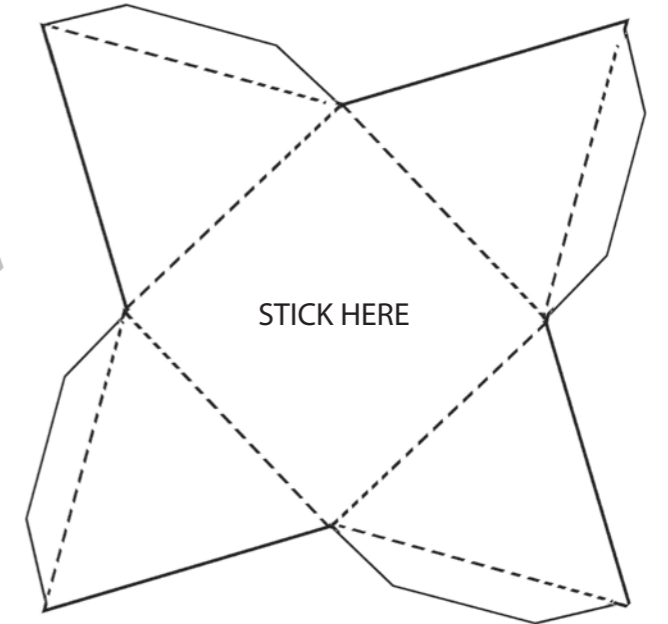
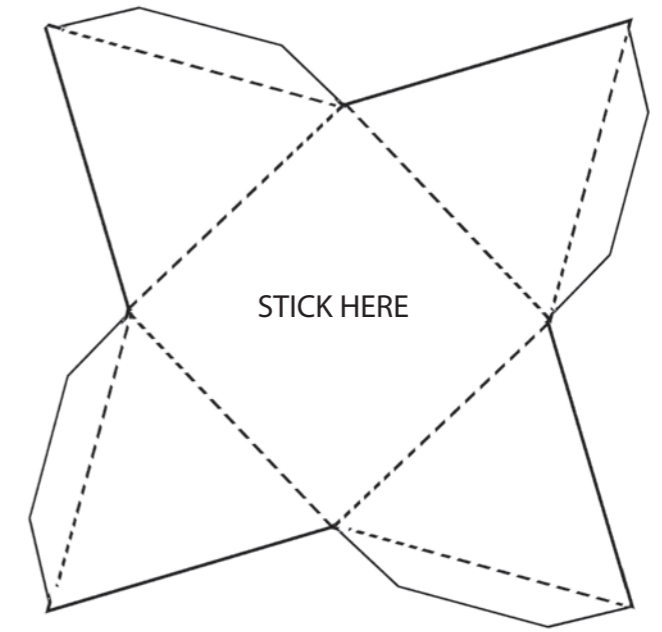
Can you see all the minerals that it is made from?

The main minerals are FELDSPAR, BIOTITE and QUARTZ.

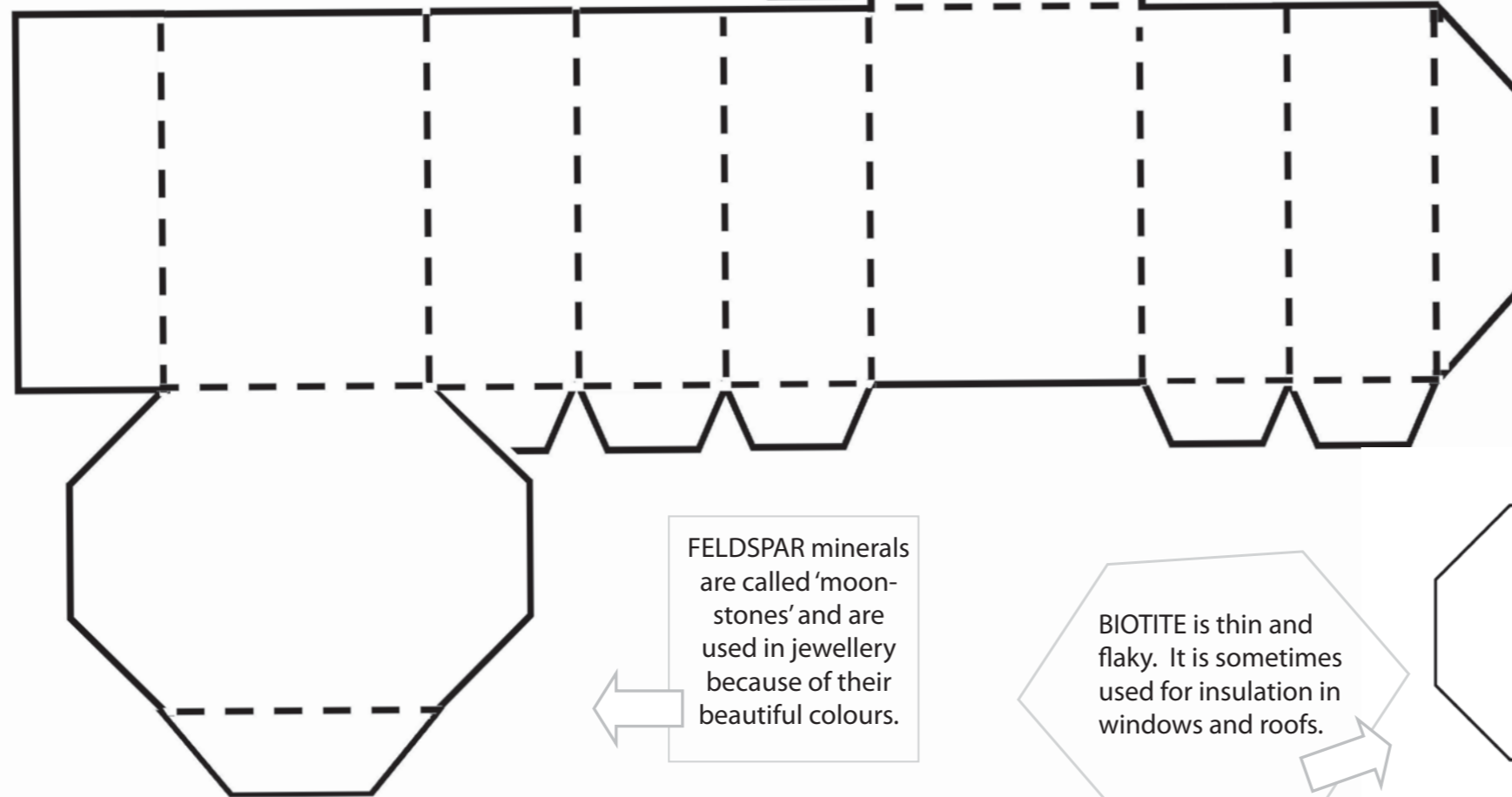
The shapes below are giant versions of these minerals.

☆ Colour in, cut out and stick together these mineral shapes.

☆ Stick your shapes together to make your very own GRANITE rock.



QUARTZ can have this trigonometric shape or variations of it. Quartz is often used in watches to reliably regulate electrical flow and keep good time.



FELDSPAR minerals are called 'moonstones' and are used in jewellery because of their beautiful colours.

BIOTITE is thin and flaky. It is sometimes used for insulation in windows and roofs.

