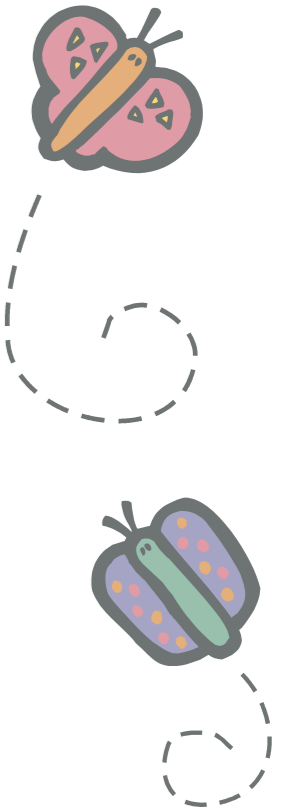
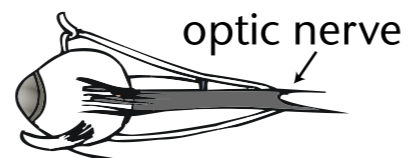
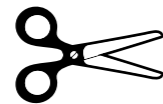
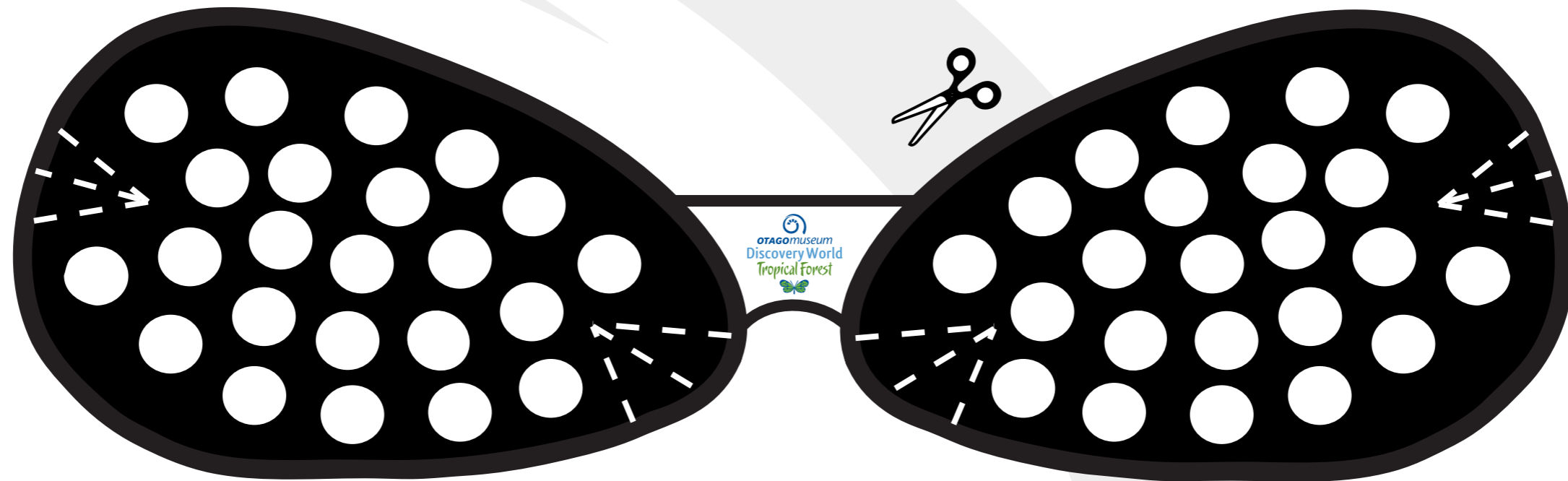




BUTTERFLY GLASSES

Like all insects, butterflies have compound eyes - lots of eye lenses meshed together in a group. Compound eyes allow insects to see a broad range of vision and give them the ability to pick up fine details and movement. But it also means insects are very short sighted!

The term for the small eye lenses on butterflies is 'ommatidium'



Each eye lens is connected to the brain by an optic nerve and contributes one small spot of the picture - similar to each of the pixels on a computer screen!

The quality of sight for an insect is determined by how many small lenses it has - the more lenses on each eye, the more parts of the picture an insect can see at a certain distance.

Although scientists understand how the eyes of insects work, it is difficult to know exactly what insects see like through their eyes. These glasses give you an idea of what it might be like to see as an insect does.

INSTRUCTIONS



- * Cut around the outside of the frames
- * Use a hole punch to cut out the small circles on each eye frame
- * Line the inside of your frames with coloured cellophane
- * Fold darts along the dashed lines on each eye frame and staple the darts to hold them in place
- * Staple a piece of wool (measured to your head) to both sides of the frame and put your glasses on!

What does it look like to see the world through a butterfly's eyes?