



OTAGO
museum

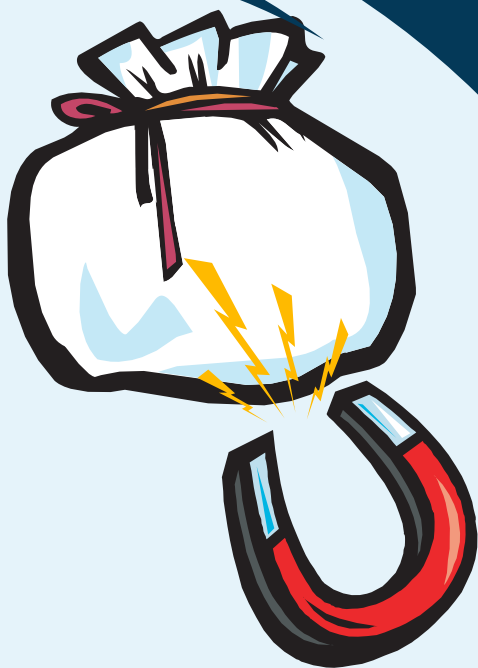
Amazing magnetic breakfast

Materials:

- cereal in a see-through plastic bag
- a magnet

Put the magnet close to the bag of cereal and move it around, dragging the magnet from side to side. Look closely at what is being attracted to the magnet. What do you think that is?

Can you find out by reading the information on the packets which cereals have the highest iron content and test them with your magnet? Why do you think people would want iron in their food? What other objects around your classroom are attracted to the magnet?



How it works

A lot of breakfast cereals on the market today have added iron in them. Iron is attracted to magnets, which is why you can see the cereal moving as you drag the magnet from side to side.